

Table I. Viable microfungal genera obtained from 1927 outdoor measurements from 1978-1987.

Percentages of the four dominant genera are from the total number of colonies obtained (CFU).

	CFU	%
<i>Cladosporium</i>	595.937	77.8
<i>Alternaria</i>	22.596	3.0
<i>Penicillium</i>	19.331	2.5
<i>Aspergillus</i>	6.017	0.8
<i>Acremonium</i>		
<i>Arthrinium</i>		
<i>Aureobasidium</i>		
<i>Botrytis</i>		
<i>Chaetomium</i>		
<i>Chrysosporium</i>		
<i>Doratomyces</i>		
<i>Epicoccum</i>		
Fungi imperfecti		
<i>Fusarium</i>		
<i>Geotrichum</i>		
<i>Gliomastix</i>		
<i>Helminthosporium</i>		
<i>Humicola</i>		
<i>Mucor</i>		15.9
<i>Mycelia sterilia</i>		
<i>Nigrospora</i>		
<i>Oedocephalum</i>		
<i>Paecilomyces</i>		
<i>Phoma</i>		
<i>Pithomyces</i>		
<i>Rhizopus</i>		
<i>Rhodotorula</i>		
<i>Scopulariopsis</i>		
<i>Sporobolomyces</i>		
<i>Stachybotrys</i>		
<i>Stemphylium</i>		
<i>Trichoderma</i>		
<i>Trichosporon</i>		
<i>Trichothecium</i>		
<i>Ulocladium</i>		
<i>Verticillium</i>		
Yeasts (others)		
Total colony count m⁻³	765.828	100

capacity was 0.3 m³ air 10 min⁻¹ which was the operating time in order to prevent overloading of spores to the agar surface. The fungal particles were caught on V-8-agar with antibiotics (Larsen 1981) and cultivated at 25°C. V-8-agar is a broad medium that allows growth and sporulation of most living saprophytic microfungi. After 4-6 days of growth the appeared colonies were identified to genera or to species level after standard taxonomic criteria (von Arx 1970, Bar-ron 1968, Ellis 1971, Zycha 1969).

From 1978 to 1982 the Slit-Sampler was placed at station I: The roof of Allergological Lab. (ALK), Amager, Copen-hagen, 10 m above sea level and run once daily all the year

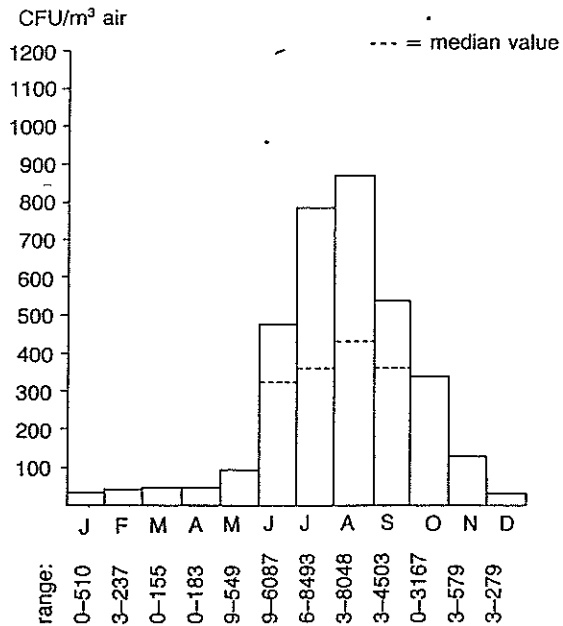


Fig. 1. Total colony counts of viable airborne microfungi from 10 years' collection given as mean- and median values (n = 1927) caught with a BIAP Slit-Sampler on V-8-agar. (CFU = colony forming units).

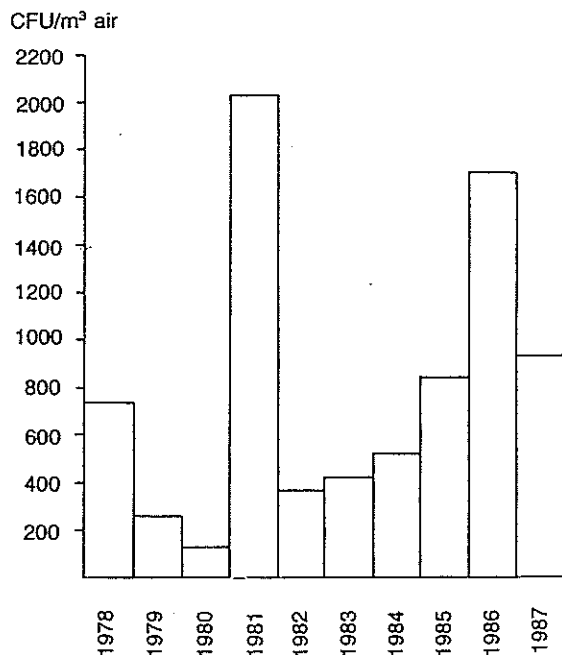


Fig. 2. The variation of the total colony count for the month of July during ten years (mean-values, n = 228). (CFU = colony forming units).